

# Stuart Park Bush Plant List

2/11/2022

Compiled by Shaun Thompson

The Stuart Park bush (-41.108769, 174.827784) is a very small coastal forest located on the southern edge of Titahi Bay with an estimated area of roughly 20 acres. The bush area is situated in a small gully with a slow flowing small stream that is dry for much of its length. A small unofficial track cuts through the middle of the bush and follows the stream to the upper margin of the bush. At this upper margin there is a dense patch of *Phorium tenax* and the origin of this patch is unclear.

The canopy is roughly 4.5m tall and is composed of *Melicytus ramiflorus* and *Myoporum laetum* with a few exceptions such as *Podocarpus totara* and *Pectinopitys ferruginea*. The understory is sparse and is predominantly *Piper excelsum* and has few fern species. Along the upper ends of the track, the understory becomes especially sparse.

It seems likely that much of the native vegetation in the bush is the result of intentional planting efforts. Throughout other areas of Stuart Park, there has been extensive replanting efforts. One resident informed me that during the 1970s, a farmer spread native plant seeds throughout the bush area itself. It is likely that many species in this list were planted but have not been recognized as such.

Perhaps due to its proximity to residential areas and due to a lack of weed control, there is an abundance of exotic species in Stuart Park, especially along the margins. Some parts of the eastern and southern margins of the bush are adjacent to residential homes. In many of the homes, the gardens freely mix with the bush and may be a source of some of the exotic species.

## Abbreviations

E = exotic

Nw = Native to Wellington

N = Native to New Zealand but not Wellington

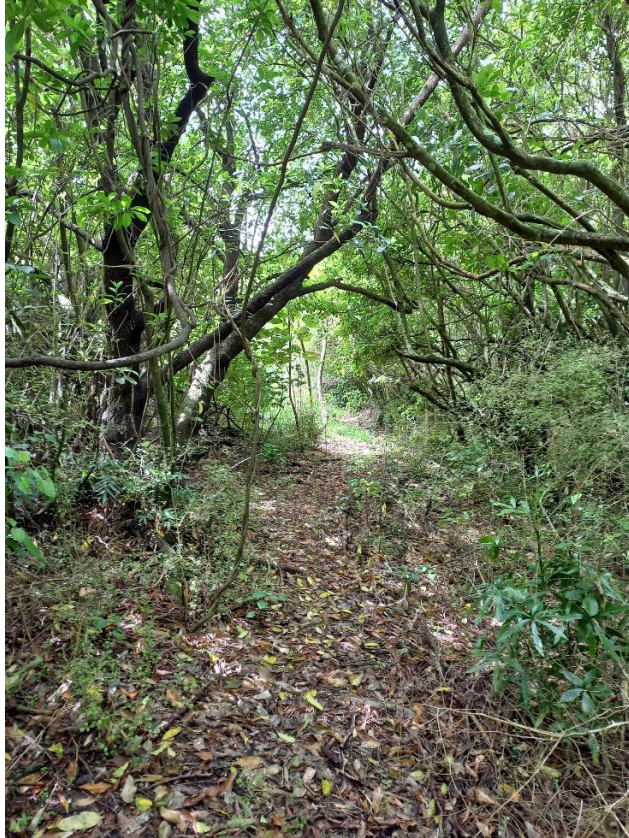
P/P? = Planted/Planted?

Species	iNaturalist link
<i>Acacia dealbata</i> E, P	<a href="https://inaturalist.nz/observations/137825243">https://inaturalist.nz/observations/137825243</a>
<i>Acacia pravissima</i> E, P	<a href="https://inaturalist.nz/observations/137825475">https://inaturalist.nz/observations/137825475</a>
<i>Acaena novae-zelandiae</i> E	<a href="https://inaturalist.nz/observations/42039233">https://inaturalist.nz/observations/42039233</a>
<i>Agapanthus praecox</i> E, P	<a href="https://inaturalist.nz/observations/137824918">https://inaturalist.nz/observations/137824918</a>
<i>Alectryon excelsus</i> Nw	<a href="https://inaturalist.nz/observations/137832802">https://inaturalist.nz/observations/137832802</a>
<i>Allium triquetrum</i> E	<a href="https://inaturalist.nz/observations/137829553">https://inaturalist.nz/observations/137829553</a>
<i>Apodasmia similis</i> Nw	<a href="https://inaturalist.nz/observations/137829182">https://inaturalist.nz/observations/137829182</a>
<i>Artemisia arborescens</i> E, P?	<a href="https://inaturalist.nz/observations/137826436">https://inaturalist.nz/observations/137826436</a>
<i>Asplenium appendiculatum</i> Nw	<a href="https://inaturalist.nz/observations/138087935">https://inaturalist.nz/observations/138087935</a>
<i>Asparagus scandens</i> E	<a href="https://inaturalist.nz/observations/137831046">https://inaturalist.nz/observations/137831046</a>

<i>Asplenium gracillimum</i> Nw	<a href="https://inaturalist.nz/observations/137832899">https://inaturalist.nz/observations/137832899</a>
<i>Asplenium oblongifolium</i> Nw	<a href="https://inaturalist.nz/observations/137834039">https://inaturalist.nz/observations/137834039</a>
<i>Beilschmiedia tawa</i> Nw, P?	<a href="https://inaturalist.nz/observations/137832850">https://inaturalist.nz/observations/137832850</a>
<i>Brachyglottis repanda</i> Nw	<a href="https://inaturalist.nz/observations/138088152">https://inaturalist.nz/observations/138088152</a>
<i>Calystegia tuguriorum</i> Nw	<a href="https://inaturalist.nz/observations/138089178">https://inaturalist.nz/observations/138089178</a>
<i>Carex geminata</i> Nw	<a href="https://inaturalist.nz/observations/137827699">https://inaturalist.nz/observations/137827699</a>
<i>Carex virgata?</i> Nw	<a href="https://inaturalist.nz/observations/137830371">https://inaturalist.nz/observations/137830371</a>
<i>Carpodetus serratus</i> Nw	<a href="https://inaturalist.nz/observations/137832583">https://inaturalist.nz/observations/137832583</a>
<i>Cerastium glomeratum</i> E	<a href="https://inaturalist.nz/observations/138088443">https://inaturalist.nz/observations/138088443</a>
<i>Clematis forsteri</i> Nw	<a href="https://inaturalist.nz/observations/138088799">https://inaturalist.nz/observations/138088799</a>
<i>Cirsium vulgare</i> E	<a href="https://inaturalist.nz/observations/137834399">https://inaturalist.nz/observations/137834399</a>
<i>Coprosma areolata</i> Nw	<a href="https://inaturalist.nz/observations/62180762">https://inaturalist.nz/observations/62180762</a>
<i>Coprosma</i> × <i>cunninghamii</i> Nw	<a href="https://inaturalist.nz/observations/137832489">https://inaturalist.nz/observations/137832489</a>
<i>Coprosma repens</i> Nw	<a href="https://inaturalist.nz/observations/137833954">https://inaturalist.nz/observations/137833954</a>
<i>Coprosma robusta</i> Nw	<a href="https://inaturalist.nz/observations/137831137">https://inaturalist.nz/observations/137831137</a>
<i>Coprosma propinqua</i> Nw	<a href="https://inaturalist.nz/observations/137829380">https://inaturalist.nz/observations/137829380</a>
<i>Cordyline australis</i> Nw, P?	<a href="https://inaturalist.nz/observations/137829909">https://inaturalist.nz/observations/137829909</a>
<i>Cortaderia selloana</i> E, P?	<a href="https://inaturalist.nz/observations/137825742">https://inaturalist.nz/observations/137825742</a>
<i>Corynocarpus laevigatus</i> N	<a href="https://inaturalist.nz/observations/138088050">https://inaturalist.nz/observations/138088050</a>
<i>Cyathea dealbata</i> Nw	<a href="https://inaturalist.nz/observations/137831766">https://inaturalist.nz/observations/137831766</a>
<i>Cyperus ustulatus</i> Nw	<a href="https://inaturalist.nz/observations/137830276">https://inaturalist.nz/observations/137830276</a>
<i>Cytisus scoparius</i> E	<a href="https://inaturalist.nz/observations/137827638">https://inaturalist.nz/observations/137827638</a>
<i>Dacrycarpus dacrydioides</i> Nw, P?	<a href="https://inaturalist.nz/observations/137827999">https://inaturalist.nz/observations/137827999</a>
<i>Daucus carota</i> E	<a href="https://inaturalist.nz/observations/137831251">https://inaturalist.nz/observations/137831251</a>
<i>Digitalis purpurea</i> E	<a href="https://inaturalist.nz/observations/137834289">https://inaturalist.nz/observations/137834289</a>
<i>Dysoxylum spectabile</i> Nw	<a href="https://inaturalist.nz/observations/137830449">https://inaturalist.nz/observations/137830449</a>
<i>Fatsia japonica</i> E	<a href="https://inaturalist.nz/observations/137829817">https://inaturalist.nz/observations/137829817</a>
<i>Foeniculum vulgare</i> E	<a href="https://inaturalist.nz/observations/137834203">https://inaturalist.nz/observations/137834203</a>
<i>Fumaria muralis</i> E	<a href="https://inaturalist.nz/observations/138089684">https://inaturalist.nz/observations/138089684</a>
<i>Geniostoma ligustrifolium</i> Nw	<a href="https://inaturalist.nz/observations/137833542">https://inaturalist.nz/observations/137833542</a>
<i>Griselinia lucida</i> Nw, P?	<a href="https://inaturalist.nz/observations/137831829">https://inaturalist.nz/observations/137831829</a>
<i>Haloragis erecta</i> Nw	<a href="https://inaturalist.nz/observations/137828441">https://inaturalist.nz/observations/137828441</a>
<i>Hoheria sexstylosa</i> Nw	<a href="https://inaturalist.nz/observations/1003902">https://inaturalist.nz/observations/1003902</a>
<i>Hedycarya arborea</i> Nw	<a href="https://inaturalist.nz/observations/137829959">https://inaturalist.nz/observations/137829959</a>
<i>Helminthotheca echioides</i> E	<a href="https://inaturalist.nz/observations/137834344">https://inaturalist.nz/observations/137834344</a>
<i>Hydrocotyle heteromeria</i> Nw	<a href="https://inaturalist.nz/observations/137833204">https://inaturalist.nz/observations/137833204</a>
<i>Hypolepis ambigua</i> Nw	<a href="https://inaturalist.nz/observations/137832295">https://inaturalist.nz/observations/137832295</a>
<i>Knightia excelsa</i> Nw, P?	<a href="https://inaturalist.nz/observations/137830671">https://inaturalist.nz/observations/137830671</a>
<i>Kunzea robusta</i> Nw	<a href="https://inaturalist.nz/observations/137830158">https://inaturalist.nz/observations/137830158</a>
<i>Laurelia novae-zelandiae</i> Nw	<a href="https://inaturalist.nz/observations/6293908">https://inaturalist.nz/observations/6293908</a>
<i>Leptospermum scoparium</i> Nw	<a href="https://inaturalist.nz/observations/137826966">https://inaturalist.nz/observations/137826966</a>

<i>Lotus pedunculatus</i> E	<a href="https://inaturalist.nz/observations/137828761">https://inaturalist.nz/observations/137828761</a>
<i>Lunularia cruciata</i> E	<a href="https://inaturalist.nz/observations/137828390">https://inaturalist.nz/observations/137828390</a>
<i>Lysimachia arvensis</i> E	<a href="https://inaturalist.nz/observations/137825925">https://inaturalist.nz/observations/137825925</a>
<i>Machaerina sinclairii</i> Nw, P?	<a href="https://inaturalist.nz/observations/137831554">https://inaturalist.nz/observations/137831554</a>
<i>Melicope ternata</i> Nw	<a href="https://inaturalist.nz/observations/137834240">https://inaturalist.nz/observations/137834240</a>
<i>Melicytus ramiflorus</i> Nw	<a href="https://inaturalist.nz/observations/137830712">https://inaturalist.nz/observations/137830712</a>
<i>Meryta sinclairii</i> N, P	<a href="https://inaturalist.nz/observations/137830620">https://inaturalist.nz/observations/137830620</a>
<i>Metrosideros excelsa</i> × <i>robusta</i> N, P	<a href="https://inaturalist.nz/observations/137829616">https://inaturalist.nz/observations/137829616</a>
<i>Metrosideros robusta</i> N, P	<a href="https://inaturalist.nz/observations/137828528">https://inaturalist.nz/observations/137828528</a>
<i>Microsorium pustulatum</i> Nw, P	<a href="https://inaturalist.nz/observations/137833455">https://inaturalist.nz/observations/137833455</a>
<i>Muehlenbeckia complexa</i> Nw, P?	<a href="https://inaturalist.nz/observations/137834166">https://inaturalist.nz/observations/137834166</a>
<i>Myoporum laetum</i> Nw	<a href="https://inaturalist.nz/observations/137830759">https://inaturalist.nz/observations/137830759</a>
<i>Myrsine australis</i> Nw	<a href="https://inaturalist.nz/observations/137830096">https://inaturalist.nz/observations/137830096</a>
<i>Orobanche minor</i> E	<a href="https://inaturalist.nz/observations/13286213">https://inaturalist.nz/observations/13286213</a>
<i>Osteospermum moniliferum</i> E	<a href="https://inaturalist.nz/observations/137825826">https://inaturalist.nz/observations/137825826</a>
<i>Ozothamnus leptophyllus</i> Nw	<a href="https://inaturalist.nz/observations/137829452">https://inaturalist.nz/observations/137829452</a>
<i>Parietaria judaica</i> E	<a href="https://inaturalist.nz/observations/137832062">https://inaturalist.nz/observations/137832062</a>
<i>Parietaria officinalis</i> E	<a href="https://inaturalist.nz/observations/62181054">https://inaturalist.nz/observations/62181054</a>
<i>Parsonsia capsularis</i> Nw	<a href="https://inaturalist.nz/observations/91908900">https://inaturalist.nz/observations/91908900</a>
<i>Parsonsia heterophylla</i> Nw	<a href="https://inaturalist.nz/observations/4945418">https://inaturalist.nz/observations/4945418</a>
<i>Pellaea rotundifolia</i> Nw	<a href="https://inaturalist.nz/observations/137831713">https://inaturalist.nz/observations/137831713</a>
<i>Pennantia corymbosa</i> Nw	<a href="https://inaturalist.nz/observations/137832457">https://inaturalist.nz/observations/137832457</a>
<i>Phormium tenax</i> Nw, P?	<a href="https://inaturalist.nz/observations/137830873">https://inaturalist.nz/observations/137830873</a>
<i>Phytolacca octandra</i> E	<a href="https://inaturalist.nz/observations/137831474">https://inaturalist.nz/observations/137831474</a>
<i>Pinus radiata</i> E, P	<a href="https://inaturalist.nz/observations/137834512">https://inaturalist.nz/observations/137834512</a>
<i>Piper excelsum</i> Nw	<a href="https://inaturalist.nz/observations/137830954">https://inaturalist.nz/observations/137830954</a>
<i>Pittosporum crassifolium</i> N, P?	<a href="https://inaturalist.nz/observations/137833631">https://inaturalist.nz/observations/137833631</a>
<i>Pittosporum eugenioides</i> Nw, P?	<a href="https://inaturalist.nz/observations/137825988">https://inaturalist.nz/observations/137825988</a>
<i>Pittosporum tenuifolium</i> Nw, P?	<a href="https://inaturalist.nz/observations/137827418">https://inaturalist.nz/observations/137827418</a>
<i>Plantago lanceolata</i> E	<a href="https://inaturalist.nz/observations/138088329">https://inaturalist.nz/observations/138088329</a>
<i>Podocarpus totara</i> Nw, P?	<a href="https://inaturalist.nz/observations/137833333">https://inaturalist.nz/observations/137833333</a>
<i>Polycarpon tetraphyllum</i> E	<a href="https://inaturalist.nz/observations/137828871">https://inaturalist.nz/observations/137828871</a>
<i>Polystichum neozelandicum</i> Nw	<a href="https://inaturalist.nz/observations/137831919">https://inaturalist.nz/observations/137831919</a>
<i>Polystichum oculatum</i> Nw	<a href="https://inaturalist.nz/observations/137827282">https://inaturalist.nz/observations/137827282</a>
<i>Prumnopitys ferruginea</i> Nw, P?	<a href="https://inaturalist.nz/observations/137828101">https://inaturalist.nz/observations/137828101</a>
<i>Prumnopitys taxifolia</i> Nw, P?	<a href="https://inaturalist.nz/observations/6293911">https://inaturalist.nz/observations/6293911</a>
<i>Prunella vulgaris</i> E	<a href="https://inaturalist.nz/observations/137830009">https://inaturalist.nz/observations/137830009</a>
<i>Pseudopanax crassifolius</i> Nw, P	<a href="https://inaturalist.nz/observations/137832661">https://inaturalist.nz/observations/137832661</a>
<i>Pseudopanax crassifolius</i> × <i>lessonii</i> N, P	<a href="https://inaturalist.nz/observations/140745919">https://inaturalist.nz/observations/140745919</a>
<i>Pseudopanax lessonii</i> N, P	<a href="https://inaturalist.nz/observations/137833286">https://inaturalist.nz/observations/137833286</a>
<i>Pteris tremula</i> Nw	<a href="https://inaturalist.nz/observations/137831996">https://inaturalist.nz/observations/137831996</a>

<i>Ranunculus repens</i> E	<a href="https://inaturalist.nz/observations/137834466">https://inaturalist.nz/observations/137834466</a>
<i>Raphanus raphanistrum</i> E	<a href="https://inaturalist.nz/observations/138089613">https://inaturalist.nz/observations/138089613</a>
<i>Rhopalostylis sapida</i> Nw	<a href="https://inaturalist.nz/observations/137832409">https://inaturalist.nz/observations/137832409</a>
Complex <i>Rubus fruticosus</i> E	<a href="https://inaturalist.nz/observations/137831191">https://inaturalist.nz/observations/137831191</a>
<i>Rumex obtusifolius</i> E	<a href="https://inaturalist.nz/observations/137826791">https://inaturalist.nz/observations/137826791</a>
<i>Senecio glastifolius</i> E	<a href="https://inaturalist.nz/observations/137829094">https://inaturalist.nz/observations/137829094</a>
<i>Senecio hispidulus</i> Nw	<a href="https://inaturalist.nz/observations/137826841">https://inaturalist.nz/observations/137826841</a>
<i>Senecio minimus</i> Nw	<a href="https://inaturalist.nz/observations/137831420">https://inaturalist.nz/observations/137831420</a>
<i>Solanum chenopodioides</i> E	<a href="https://inaturalist.nz/observations/137834082">https://inaturalist.nz/observations/137834082</a>
<i>Solanum laciniatum</i> Nw	<a href="https://inaturalist.nz/observations/19867765">https://inaturalist.nz/observations/19867765</a>
<i>Solanum nigrum</i> E	<a href="https://inaturalist.nz/observations/19726432">https://inaturalist.nz/observations/19726432</a>
<i>Stachys arvensis</i> E	<a href="https://inaturalist.nz/observations/137825154">https://inaturalist.nz/observations/137825154</a>
<i>Stellaria media</i> E	<a href="https://inaturalist.nz/observations/138089240">https://inaturalist.nz/observations/138089240</a>
<i>Syzygium maire</i> Nw, P?	<a href="https://inaturalist.nz/observations/137832703">https://inaturalist.nz/observations/137832703</a>
<i>Tetragonia trigyna</i> Nw	<a href="https://inaturalist.nz/observations/137832369">https://inaturalist.nz/observations/137832369</a>
<i>Tradescantia fluminensis</i> E	<a href="https://inaturalist.nz/observations/137826216">https://inaturalist.nz/observations/137826216</a>
<i>Trifolium repens</i> E	<a href="https://inaturalist.nz/observations/137825005">https://inaturalist.nz/observations/137825005</a>
<i>Tropaeolum majus</i> E	<a href="https://inaturalist.nz/observations/137826565">https://inaturalist.nz/observations/137826565</a>
<i>Ulex europaeus</i> E	<a href="https://inaturalist.nz/observations/137833850">https://inaturalist.nz/observations/137833850</a>
<i>Veronica stricta</i> Nw	<a href="https://inaturalist.nz/observations/137828602">https://inaturalist.nz/observations/137828602</a>
<i>Vicia sativa</i> E	<a href="https://inaturalist.nz/observations/137829677">https://inaturalist.nz/observations/137829677</a>
<i>Zantedeschia aethiopica</i> E, P?	<a href="https://inaturalist.nz/observations/137826324">https://inaturalist.nz/observations/137826324</a>



Stuart Park bush



Satellite image of Stuart Park bush in 2022

**Acknowledgements**

Identifications were given on iNaturalist (in no particular order) by Mark Smale, Mary Joyce, David Lyttle, John Barkla, Aline Homes, Joe Dillon, Leon Perrie, Barbara Parris, Graeme Ure, Katy Johns, Lloyd Esler, Tony Wills, Stephen Thorpe, Glenn Stewart and others I have missed or whose real names could not be discerned.